

# Windpark at Mount Panachaiko, Greece

Presented by Peter Kadar  
[peter.kadar@kvk.uni-obuda.hu](mailto:peter.kadar@kvk.uni-obuda.hu)

02.07.2010.

Patra Summer University



10 km

Ναχάκι  
Naxos

# Mount Panachaiko from Rio





The bridge is too far...



In operation



# Under construction



Under construction





# Tower parts





# The broken metering tower



The new wind speed  
metering tower (60 m)



# Generator case

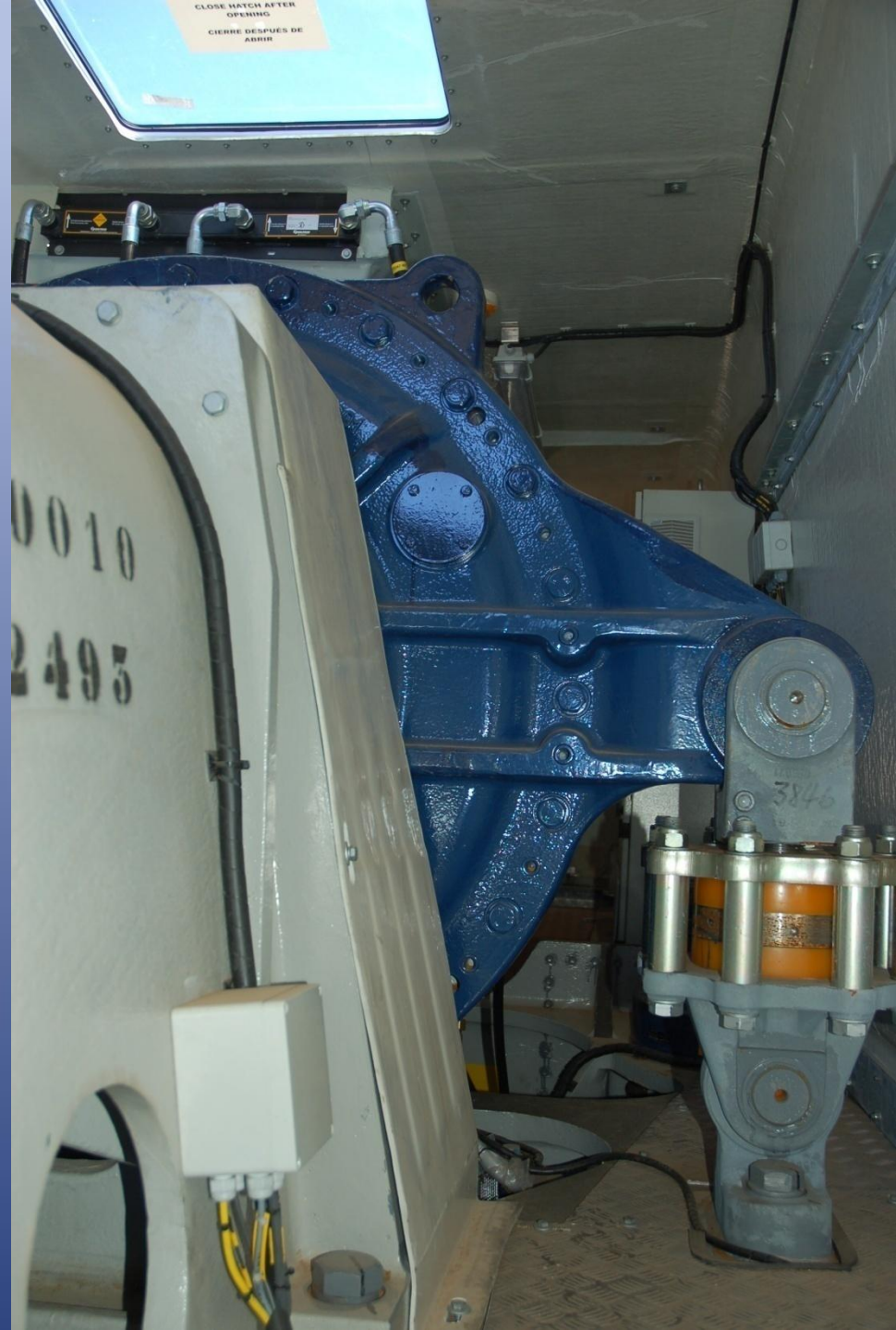


Numero de serie: 100 100 100  
CLIENTE: COCA  
PAIS: PARAGUAY  
D.E. DE FABRICA: 000 000 000  
MATERIAL: 00 000 000  
ALTA DE TURNO: 00 00 00

# The gearbox



# Suspension of the gearbox



# The generator case





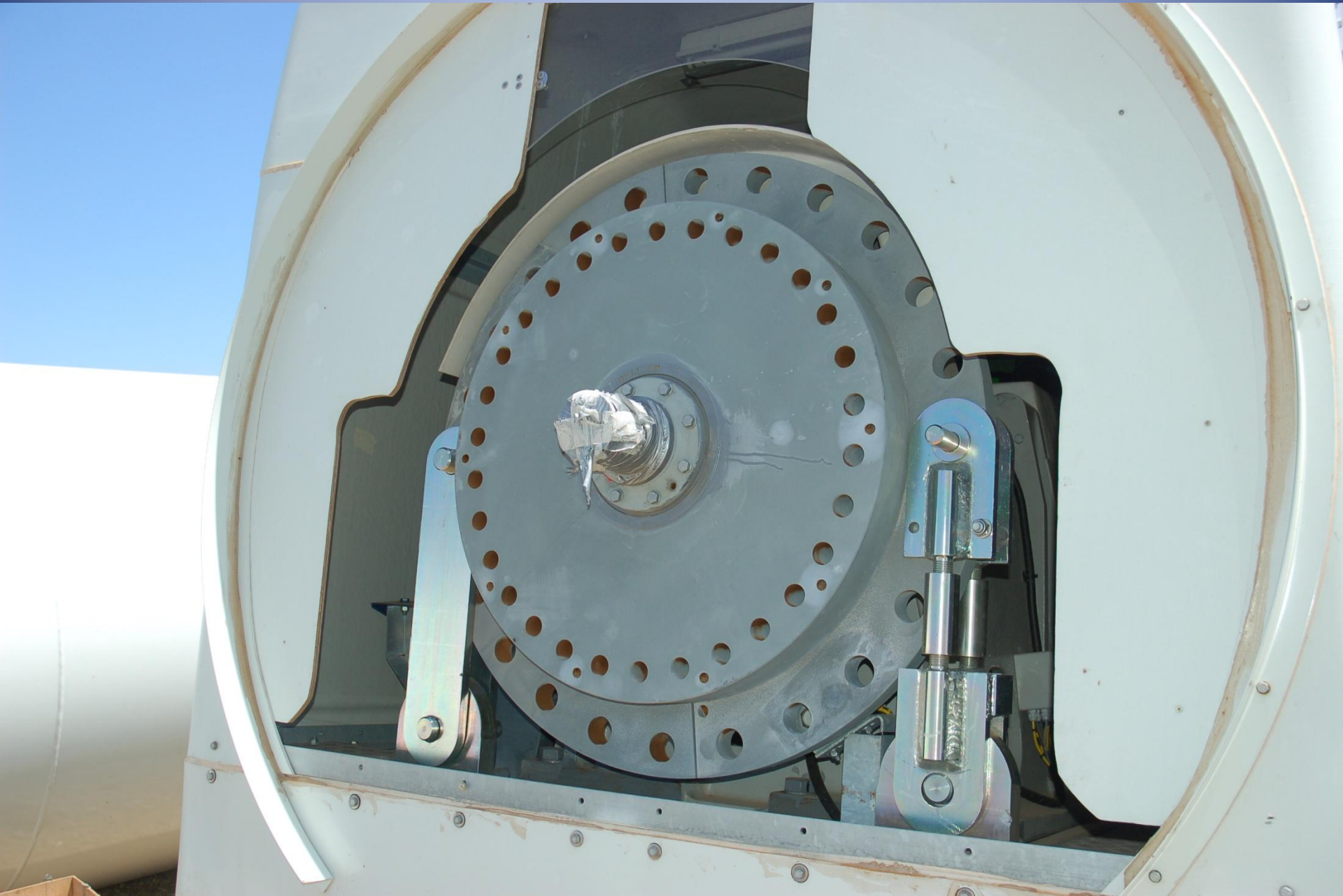
# Axe cap



# Axe central element



# The axe



Tower – 55 m



One of the three elements



# Visitors I.



# Visitors II.



Rotor blade carrier cage – rotor diameter 52 m





# Cable tube



Gamesa G52 cca. 800 kW



Ready to start



In operation





# Tourists



The bridge is too far yet...



# Windpark on Taigetos Mountains

